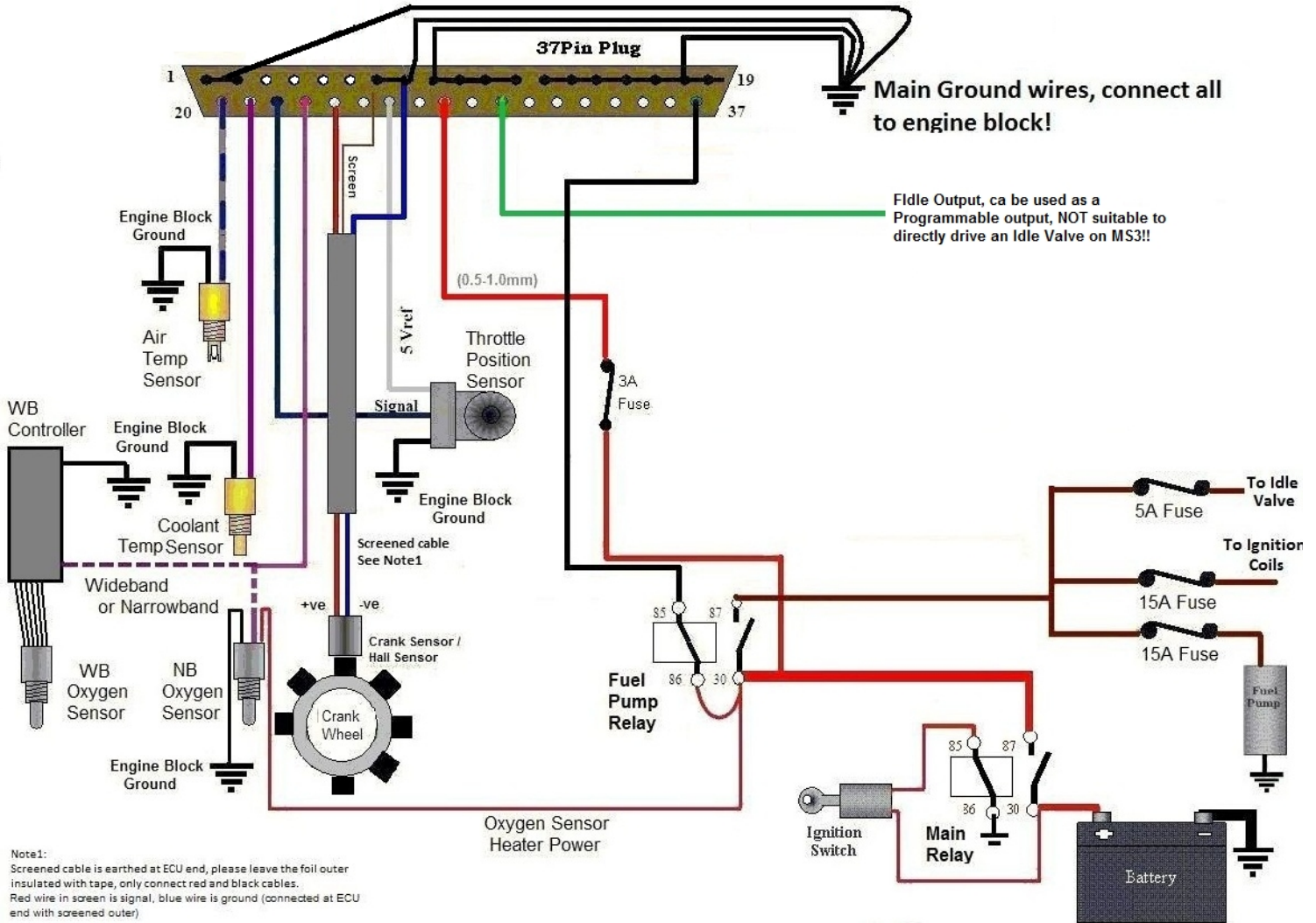




MS3 Wiring Diagram (Lower DB37 connector with female plug)



MS3 Main Board Loom (Lower DB37 connector with female plug)

Grey/Blue - Air Temperature Sensor	Black - Fuel Pump Relay
Purple - Coolant Temperature Sensor	Green - Idle Valve
Blue - Throttle Position Switch Signal	Red - +12V ignition Feed (0.5-1.0mm)
Pink - Oxygen Sensor	Black - Ground (0.5-1.0mm)
Grey - 5 Volts for TPS	

All cables from MS ECU Loom are 0.2mm unless otherwise stated

Note1:

Screened cable is earthed at the MS ECU end of the loom. Please leave this insulated at the sensor end, simply connect the red and (black/blue) cables within the screened cable. The red cable, in the screen, is the signal cable, the black/blue cable is ground.

The above diagram shows the fuel pump relay providing power to the ignition coils, idle valve, etc. this is a good idea to protect the ECU whilst setting it up as power only gets to the drive components when the ECU sees an RPM.

Upper DB37 Connector

8cy engine

MS3X Board Wiring Diagram

