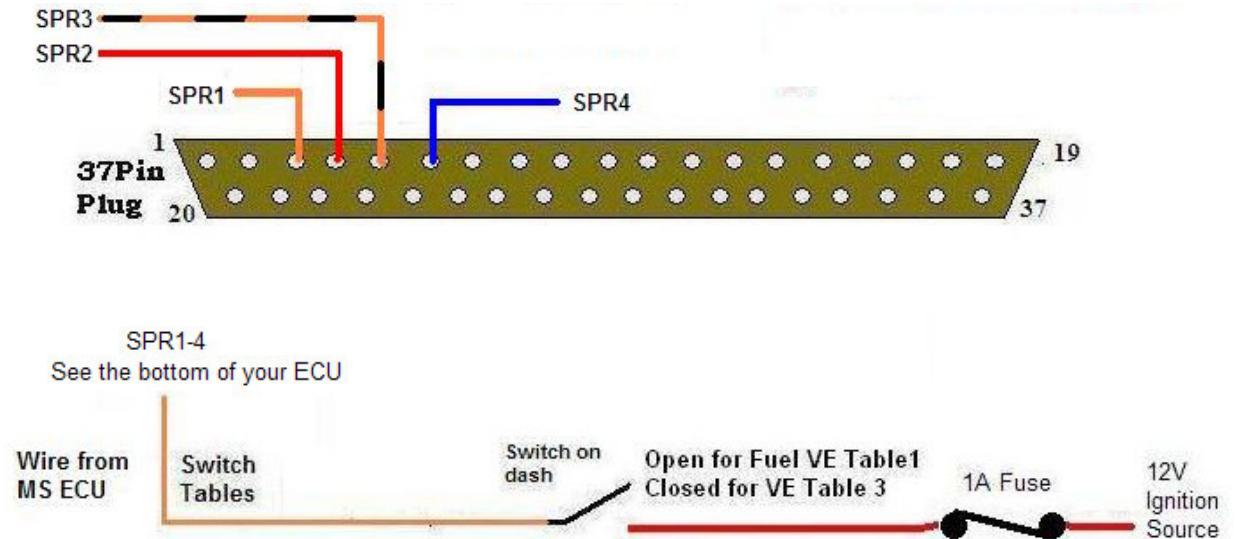




## Switch Maps Wiring

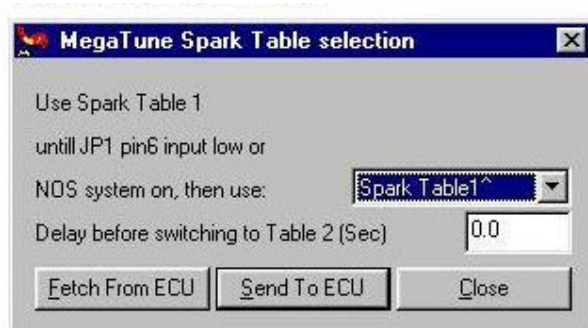


This feature allows you to swap between a different fuel map, spark map (MS1 can also swap boost maps when used with Boost control) The main purpose of this is to swap between LPG and Petrol, or another fuel.  
*Whilst it can be used for swapping between a street map and a racing map this isn't usually needed as your right foot should control how fast you want to go. Maps should be tuned for max efficiency whilst you drive with a light foot and then for max power when you get heavy footed!*

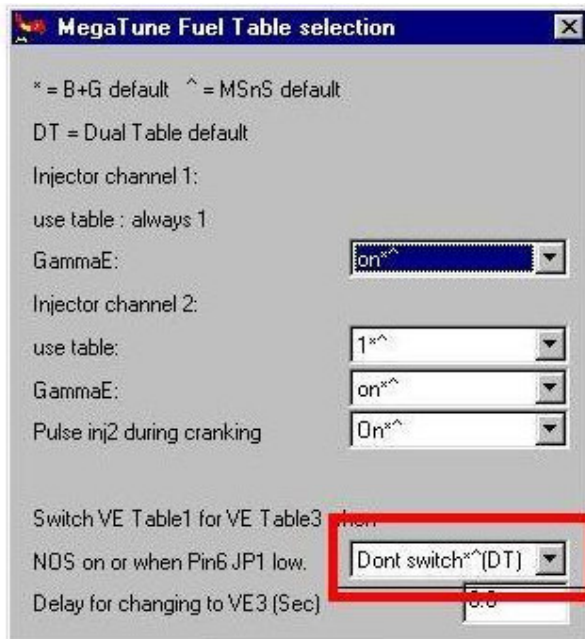
### MS1-Extra:

To swap spark tables goto **Spark Menu – Spark Table Selection**  
Select Spark Table 2 and it will switch to a new table.

**Ensure you tune Spark Table 2 in Spark Menu!!**



To swap the Fuel Tables goto **Advanced – Fuel Table Selections**

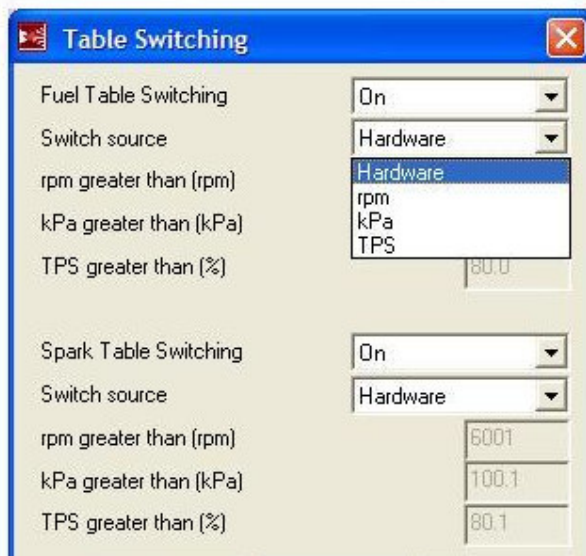


**Please note that in MS1 it swaps between VE Table 1 and VE Table 3  
Ensure you tune VE table 3!!!**

### MS2-Extra:

To swap tables in MS2-Extra goto **Extended – Table Switching Control**

**Ensure you tune any tables that you swap to!!**



The MS2 is a little different in that it can switch without any hardware mods using RPM, Kpa or TPS if you wish. If you have the hardware option then select that and it will change maps when you switch 12V to the cable in the loom I supplied.

**[www.ExtraEFI.co.uk](http://www.ExtraEFI.co.uk)**