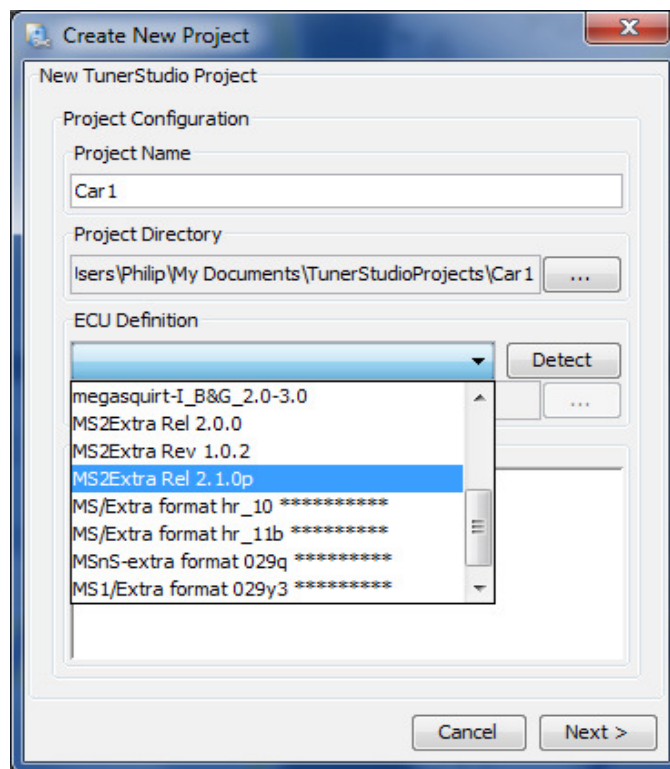




Tuner Studio Setup

If you haven't already done so, install **Tuner Studio** onto your laptop, downloadable from <http://www.ideasandsolutions.biz/tunerstudio/> this is also on the CD I provide, but that may need updating, which is done automatically. This is the latest tuning software for MegaSquirt products and has a LOT of features that MegaTune (MT) doesn't have. It is similar in layout and function to MT, so that MT users can adapt to it easily.

Once the install has finished you will be presented with making a new project:



Project name can be what ever you want, I recommend calling it MS1 or MS2, etc, incase you ever upgrade, then you can simply add another project to Tuner Studio and select either one when you want. Alternativley call it by the car, e.g. CobraMS2, etc.

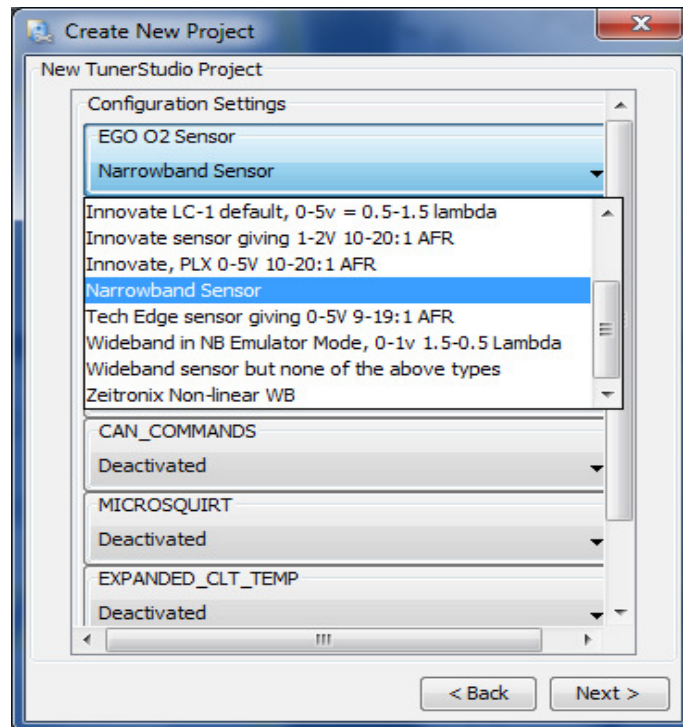
Leave the Project Directory as it is, this keeps it as a standard install.

ECU Definition is the ECU that it's going to be used on. If you already have the ECU powered up and installed then connect the comms up and select Detect. This will interigate the ECU and select the code from a list in Tuner Studio. If you have the actual ini file for your code (e.g. your using a new code thats in beta) then select the ini location by pressing the ... button. If your starting for the first time with one of my ECUs then select:

MS1/Extra Format 029y3 for an MS1 ECU

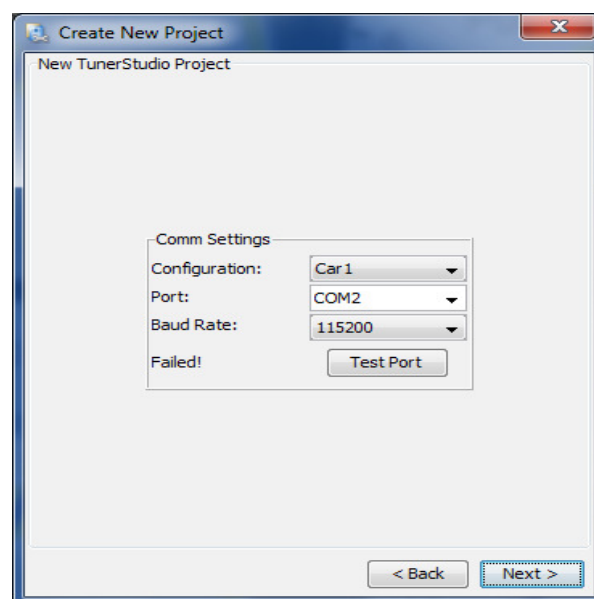
MS2Extra Rel 2.1.0 for an MS2 ECU (*Note I used V2.0.1 code on older MS2 ECUs*)

Next you need to select a few options:

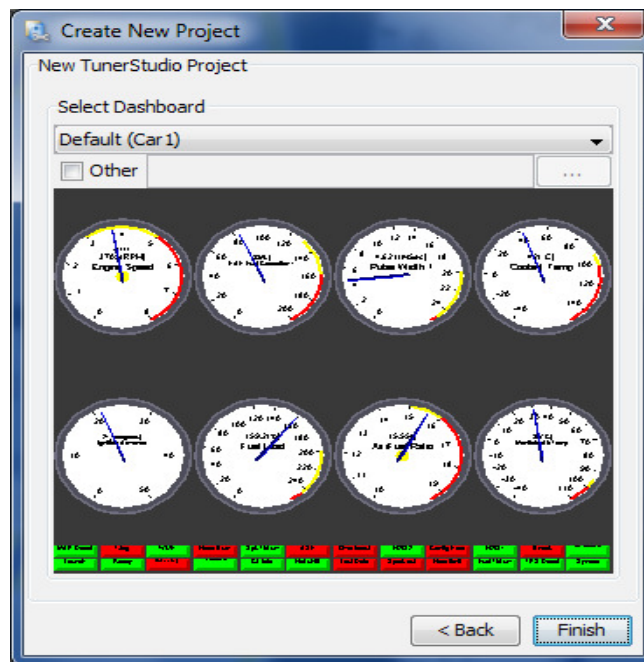


If you have a narrow band sensor then leave the EGO O2 as it is, if not then select your Wideband Lambda and output configuration you have used on it.

You can also select Celcius rather than Farenheit if you wish here. The rest should be left as the defaults. Dont worry, you can change things later.



Then you can select the baud rate and com port your using and even test it is working, as long as the ECU is powered up and connected to the laptop. Note that MS2 and MS3 use 115200 Baud rate and MS1 uses 9600.



Lastly you can select the style of display you want to use, the default is pretty good to be honest, but you can use what you want, you can even make your own!!

Once its all done you can change any settings or add another project (so if you have more than one car running MS) simply by selecting File - Project and select Project properties, etc. You can also select different gauges by right clicking on the screen and selecting a new one.

