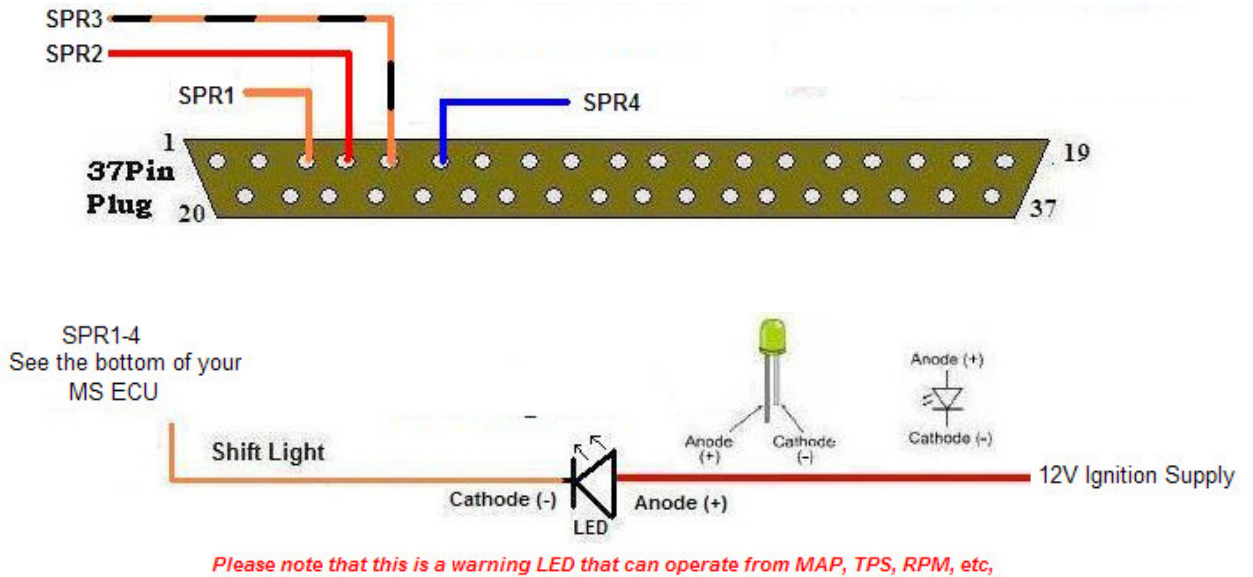


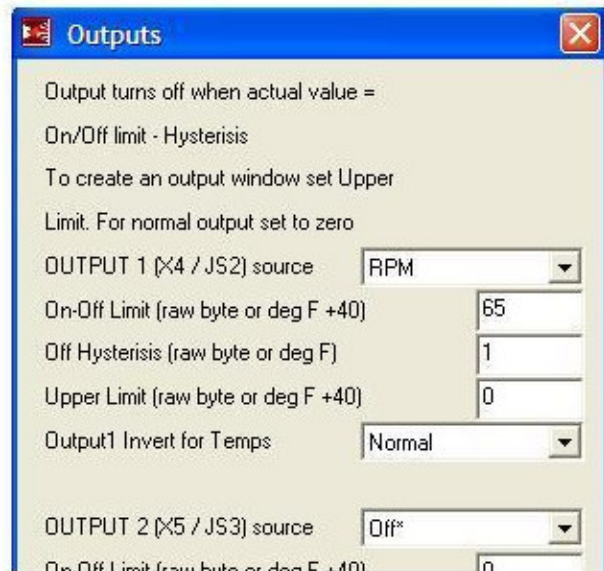


## Warning LED



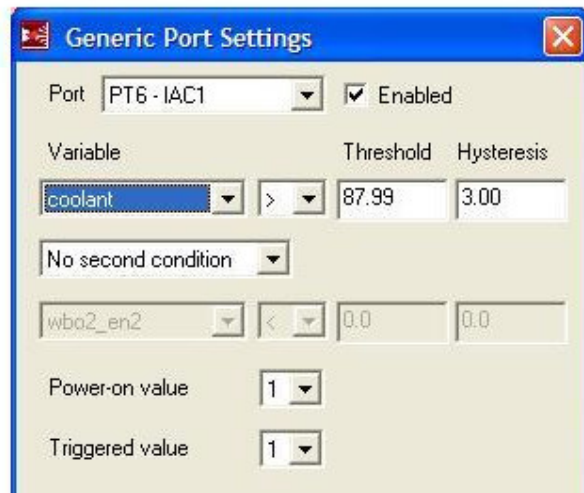
The Shift LED (Warning LED) is simply an output that switches Low when the selected source reaches the limit set. There are several possible outputs I could have used when building your ECU, it depends on the other options you have had fitted. Look at the bottom of the ECU to find out what output I have used.

### MS1-Extra



This example uses Output1 (JS2). It could equally be Outputs2-4.  
The source is set to RPM and the On-Off Limit set to 65 (this is the RAW data value which is 6500) the hysteresis is 1 (100RPM) So this will mean the LED will come on when the engine hits 6500RPM and turn off again when the engine decreases to 6400RPM

## MS2-Extra



MS2 is slightly different, in that it can use 2 conditions to switch the output on with. This example shows an output that switches on if the coolant is above 88C, it will switch off when the coolant drops to 85C.

**Note that the LEDs (D14-16) are as follows:**

**PM3 - Inj LED = D14**

**PM4 - Accel LED = D16**

**PM5 - Warmup LED = D15**

**D14 is usually used for a Spark output!**