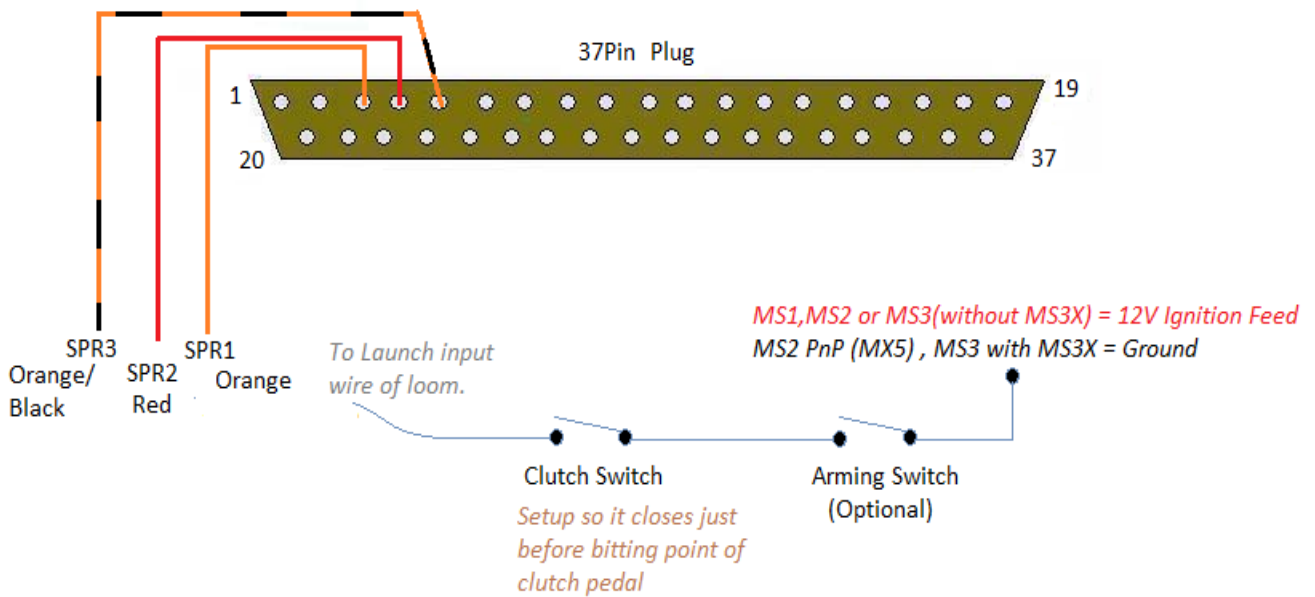




Launch Input

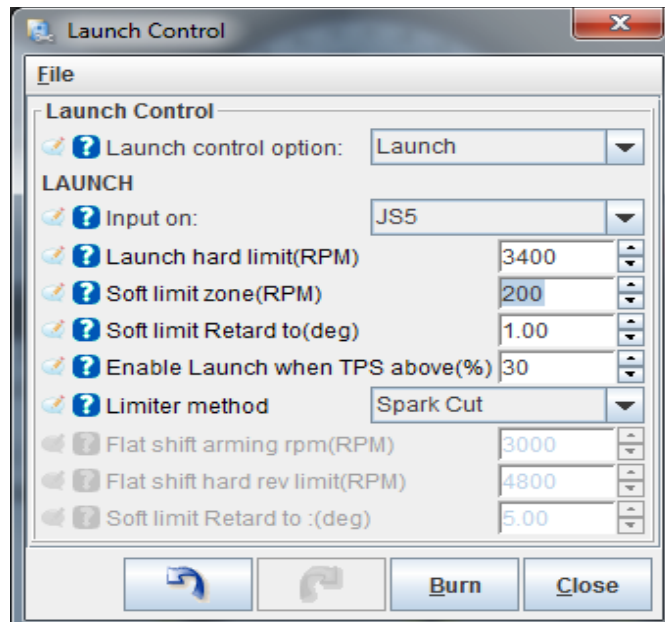
Pins 3-6 (SPR1-4) are used for any options you may have asked for when ordering your ExtraEFI MegaSquirt ECU.



Note the PnP ECUs will have a db15 loom rather than a db37.
MS3X cards can use any digital input wire (Launch, switch maps, SD Logging, etc)

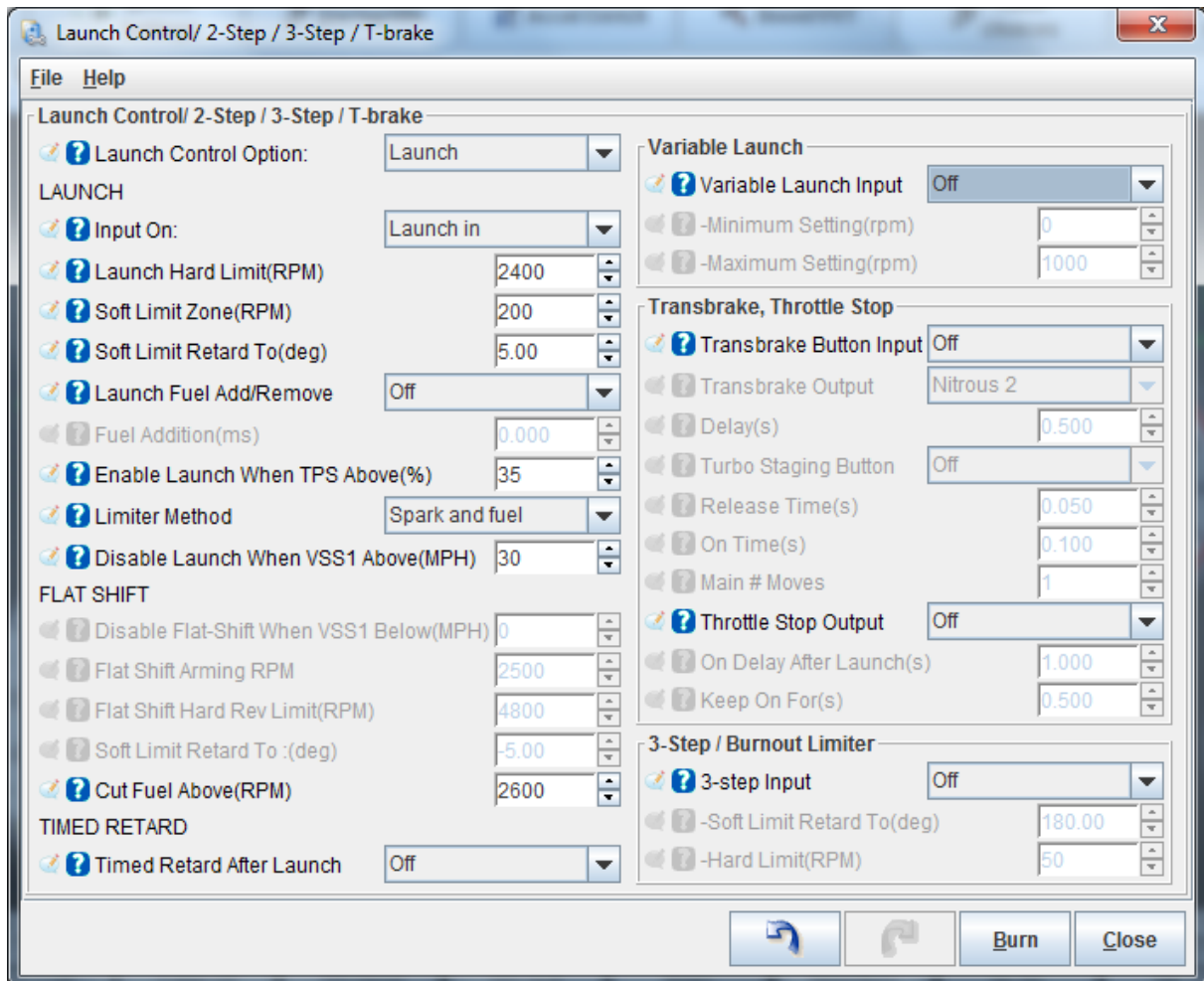
Launch control / Flat Shift operates when the input is switched from a switch on the clutch or brake. (An arming switch in line is a good idea in-case its operated by accident)

It retards the ignition to the Sft Zone Limit when the RPM reaches Soft Zone (entered



as an RPM under the Hard Limit), this reduces power and helps to slow the engine down. Then it goes into Hard Limit when the RPM reaches the **Launch Hard Limit**. The style of hard rev limit is set by the **Limiting Method** in MS2 Extra or MS3

There is also a **Flat Shift** option in the drop down menu of Launch Control, this allows you to keep your foot on the throttle during shifts to maintain the engine speed during gear changes. It has a separate set of limits for the RPM.



The MS3 settings allow for other options, like additional fueling and a maximum vehicle speed (If VSS wired into the ECU) as well as Brake based Automatic Transmission options.