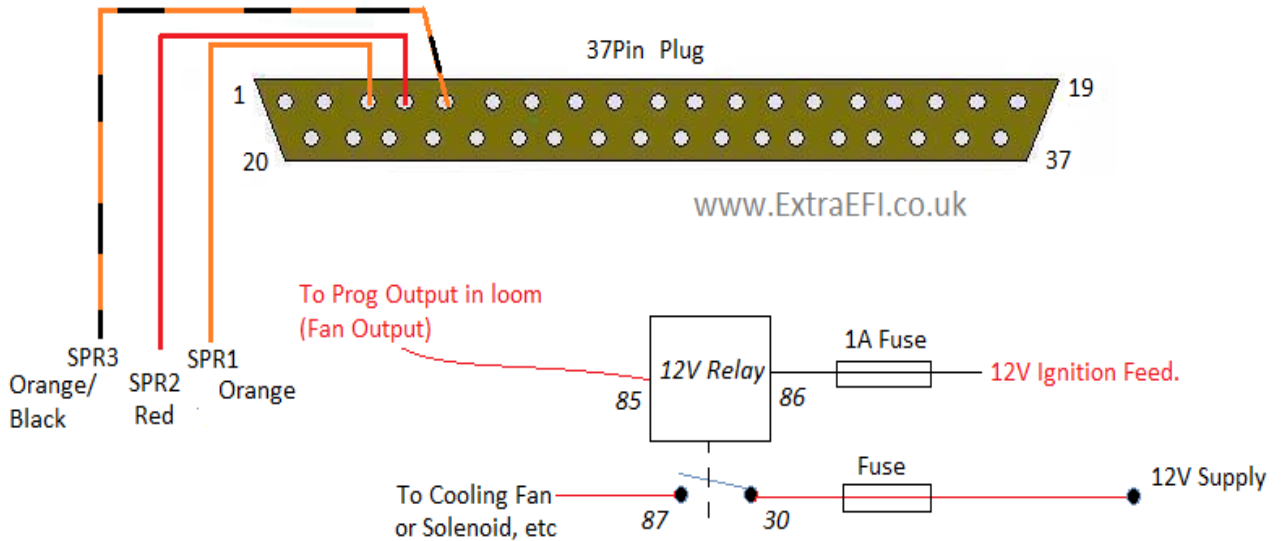




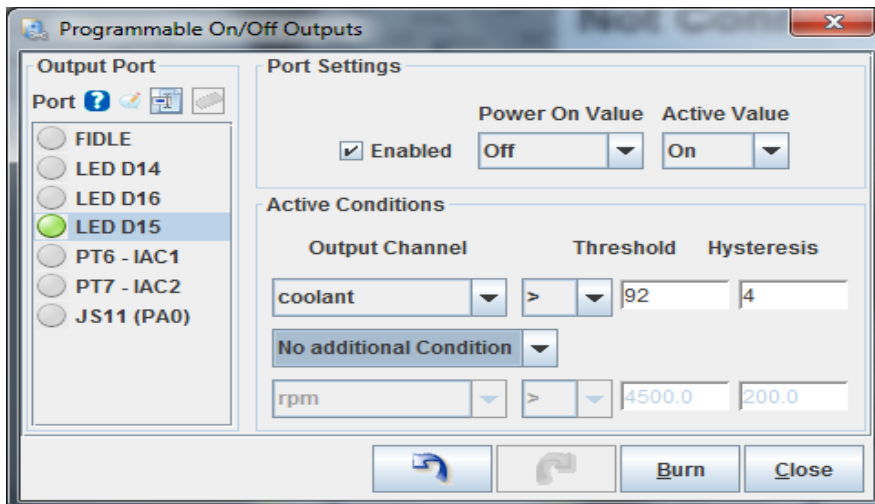
Programmable Output wiring for:
Fan, VVT Solenoid (on-off type) vacuum valve, etc

Pins 3-6 (SPR1-4) are used for any options you may have asked for when ordering your ExtraEFI MegaSquirt ECU.

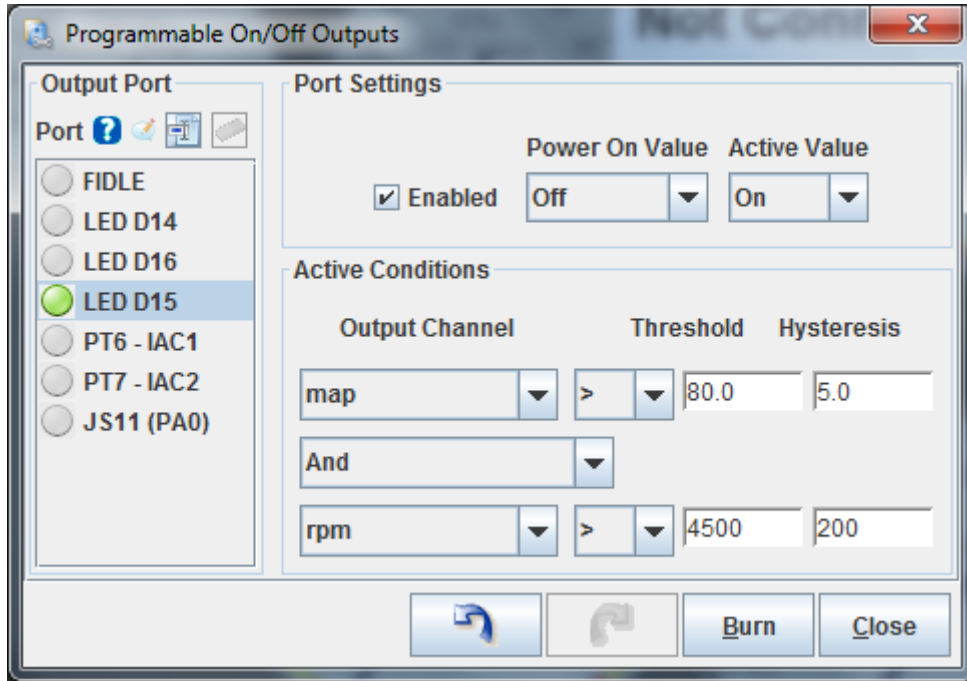


The MS ECU Prog Outs are all GROUND SWITCHING OUTPUTS!

Note: The PnP ECUs (MX5, etc) don't have the db37 pin connector, they have a db15 loom supplied with the ECU. The Cooling Fan is already wired into the main loom, but the programmable output wire (PA0) can be used for another fan, solenoid, | Boost control etc if needed.



The above example shows the output (D15) set to come on at 92C (coolant temp) and go off again 4C lower.



This example shows the output coming on when the Kpa (MAP load) goes above 80 (highish load level) and the RPM is above 4500. This would be a good starting point for a VVT solenoid to switch over. If only one condition is met it will not switch the output. Use the “OR” function if you wanted it to swap if either setting becomes true.

www.ExtraEFI.co.uk