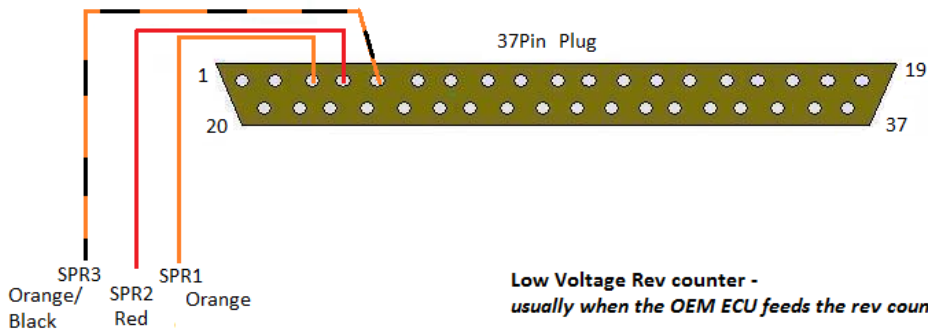




# Tacho Output for ExtraEFI ECU's

## Tacho Output Wiring

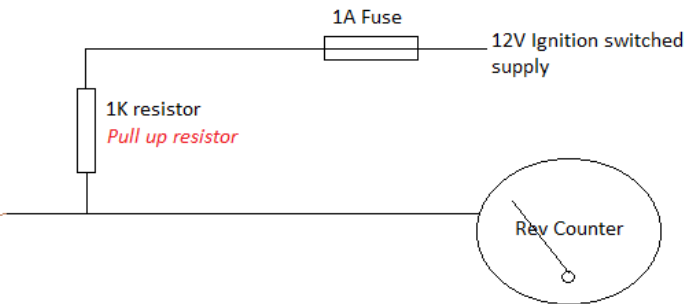
Pins 3-6 (SPR1-4) are used for any options you may have asked for when ordering your ExtraEFI MegaSquirt ECU.



**Low Voltage Rev counter -**  
*usually when the OEM ECU feeds the rev counter.*

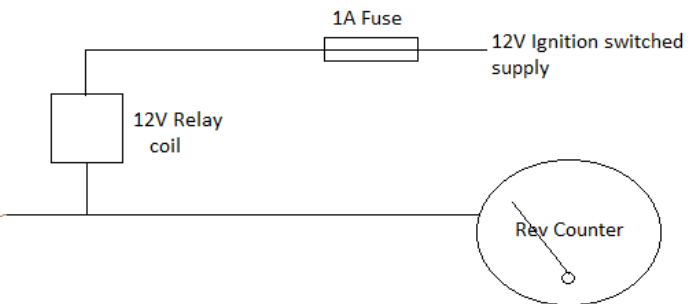
**Note:**  
*MS3X boards have the pull up resistor built in. Jumper (JP3) fitted enables the pull up resistor.*

To Tacho Wire in MS ECU loom  
(Normally SPR1)



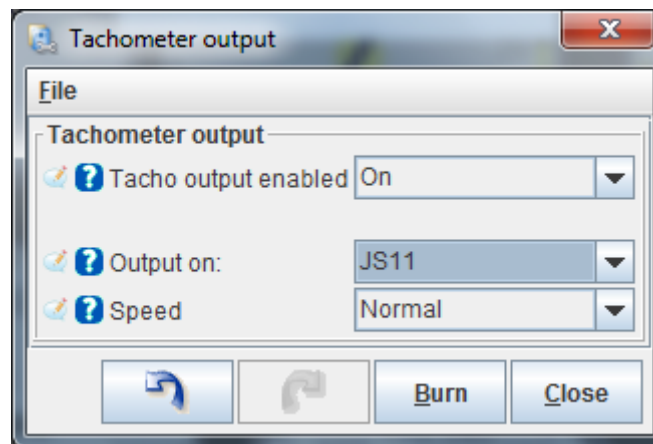
**Hi Voltage Rev counter -**  
*usually when the rev counter is fed from a coil -ve.*

To Tacho Wire in MS ECU loom  
(Normally SPR1)



## Settings in Tuner Studio:

### Basic Load Settings – Tacho Output



The normal settings for ExtraEFI ECUs are:

ECU with 3 or less spark outputs – JS11

ECU with 4 or more spark outputs – JS10

**[www.ExtraEFI.co.uk](http://www.ExtraEFI.co.uk)**