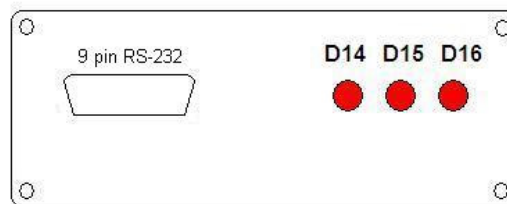


www.ExtraEFL.co.uk

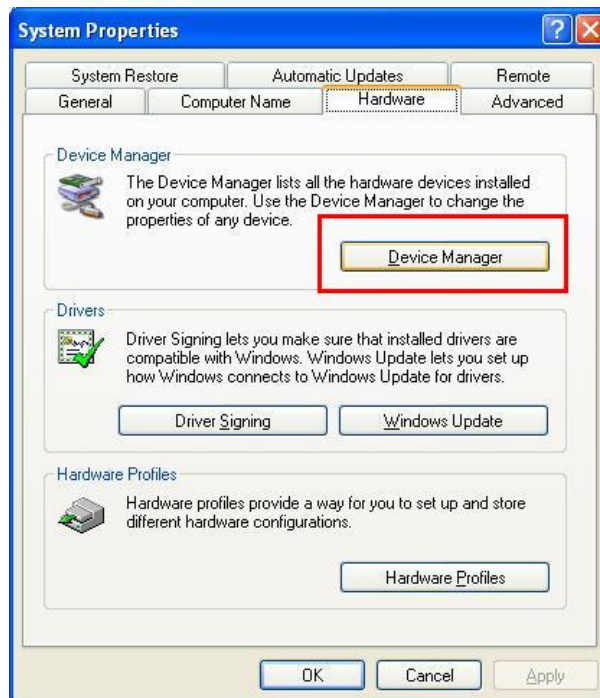
USB – PCMCIA - RS-232 Adaptors

MS1-Extra and MS2-Extra

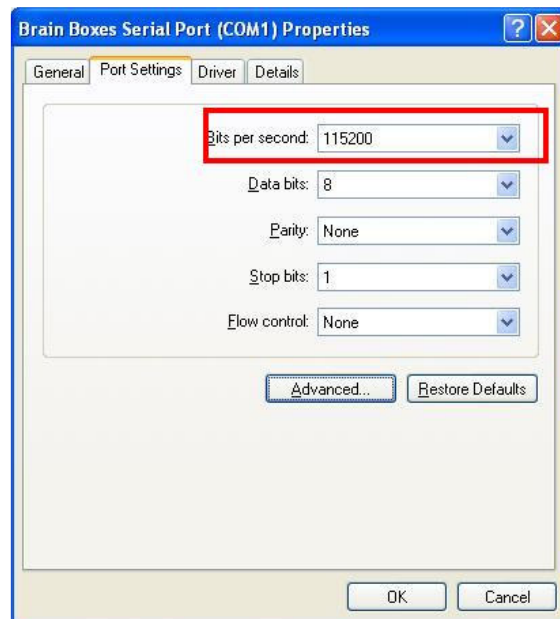
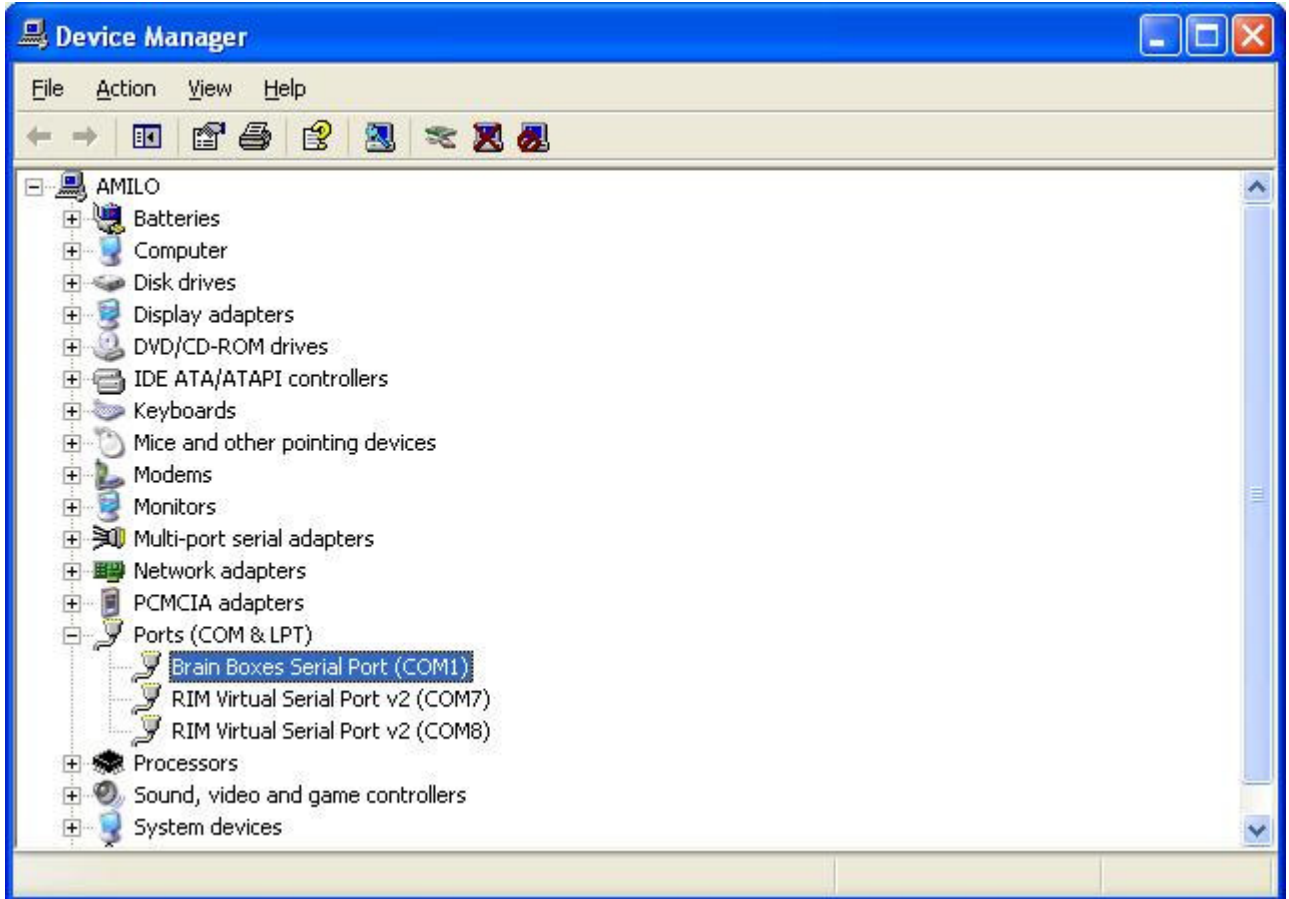
On the front of the MegaSquirt ECU there is a 9pin db connector that is used to communicate with the tuning software. It uses a protocol known as RS-232. This has been phased out of use on newer laptops in favour of USB, so in order to use it you'll need a USB-RS232 adaptor or a PCMCIA - RS232 Card.



Cheap USB adaptors from EBay have been found to be little more than useless, the best bet is to buy one from a Computer store or an Electronics company such as Maplin. Once you have installed the software set the receive and transmit rates to as low as they will go. To do this under windows go into **Control Panel - System -- Device Manager**



In here select your adaptor in the **Ports (Com & LPT)** and double click on it:



Ensure the Bits per Second is set to :

115200 if using MS2-Extra

9600 if using MS1-Extra

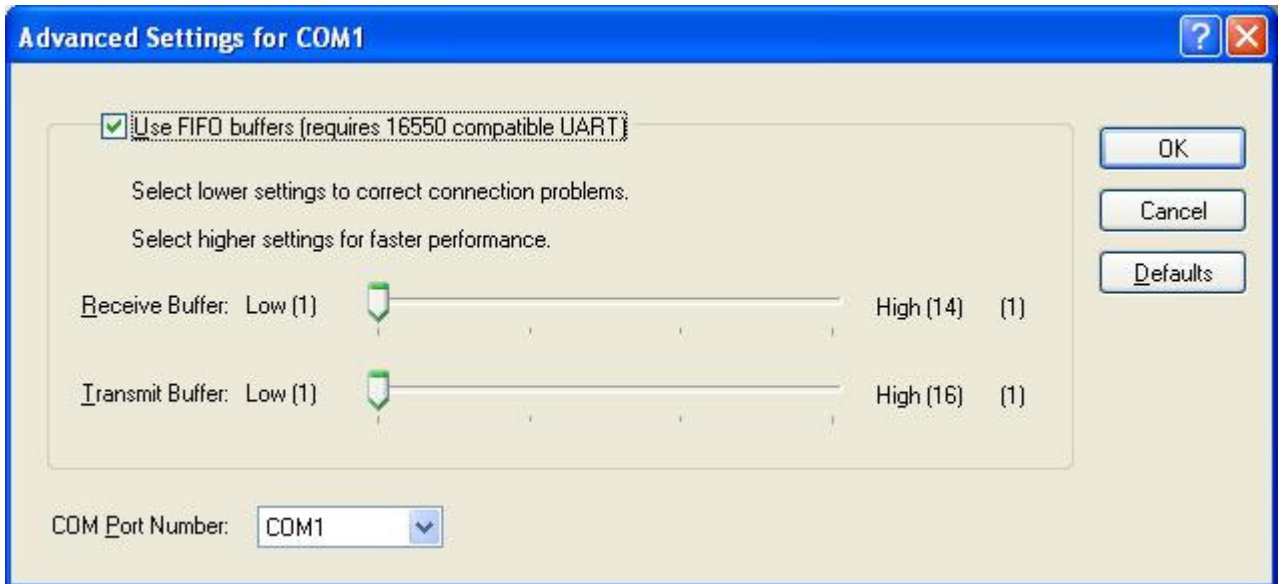
Data bits = 8

Parity = NONE

Stop Bits = 1

Flow Control = NONE

Next Click on the **Advanced button** and set the Receive Buffer and Transmit Buffers down as low as they will go. Make a note of the **COM Port Number** Click OK:



Once in MegaTune select **Communications -- Settings..**
Port set to the same as you have in the **Advanced Settings - COM Port Number**
Timer interval set to **20mS.**
If using MS1 then set the Serial Data Rate to 9600
If using MS2 then set the Serial Data Rate to 115200

