

www.ExtraEFI.co.uk

Installing MegaTune and using more than one ECU with MegaTune

Installing MegaTune:

If you have never installed MegaTune software before on your computer simply run the "MegaTune_Extra_Installer" program on the CD provided.

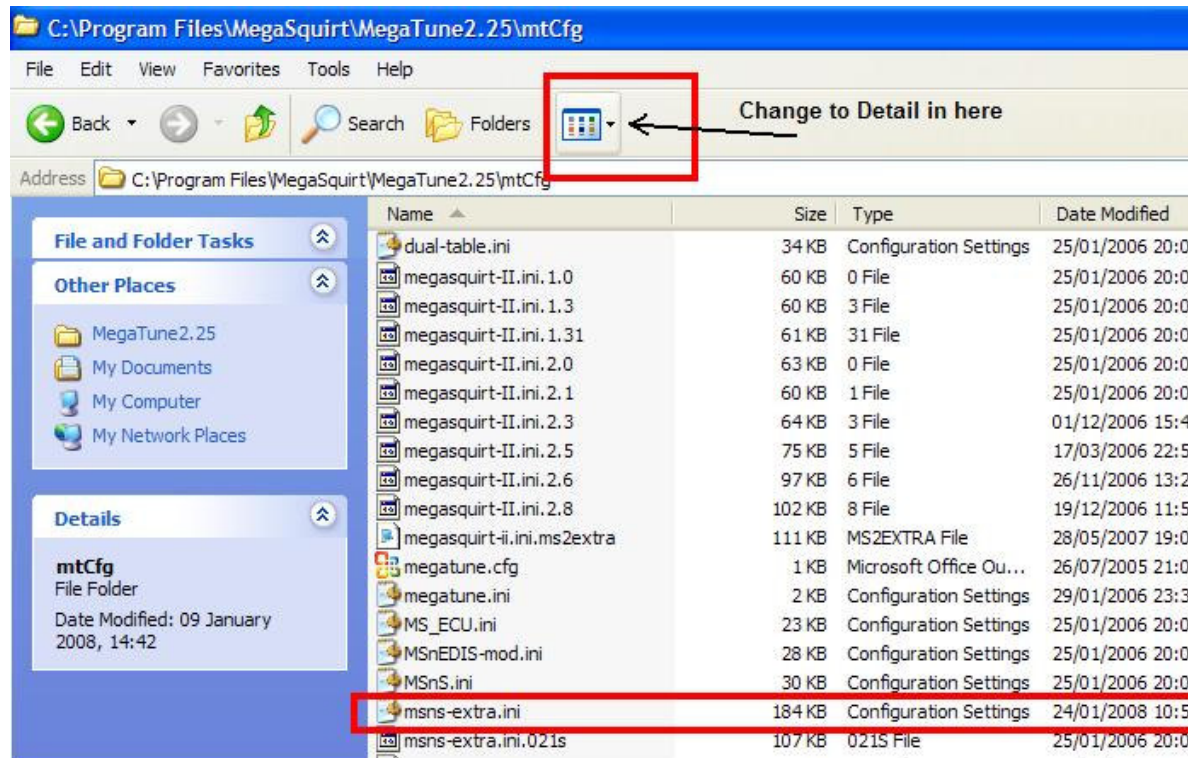
If you already have a copy of MegaTune that you have used previously on an older code (e.g. MS1-Extra pre-029y4) and you don't want to use that code version any more then simply UN-install MegaTune before installing the latest version I have supplied on the CD.

Note: Older code versions of MegaTune will not work with later versions of code on the ECU, etc!! It is important to install the version on the CD I supply for your ECU.

If you have an older code version you wish to keep using for an older MS ECU (e.g. MS1-Extra 026h8) then you will need to save and move a couple of files before Un-install MegaTune and installing the latest version for your new MS ECU.

To do this:

- Go to `c://programfiles/megasquirt/megaTune2.25/mtCfg` and find the file named "**msns-extra.ini**" ("*megasquirt-ii.ini*" for MS2-Extra) this is the file that tells MegaTune what code it is going to connect to, where data is stored on the ECU, etc. You may have to change the view to **Details** so you can see its an ini file.



- The file *msns-extra.ini* ("*megasquirt-ii.ini*" for MS2-Extra) is specific to your older MegaSquirt ECU code, so you'll need to move this file before UN-installing. To do this right click on it and select "copy".
- Next go up a couple of directories and into `c:\programfiles/megasquirt/Car1/mtCfg`, "paste" the *msns-extra.ini* file here ("*megasquirt-ii.ini*" for MS2-Extra).
- Now go back to `c:\programfiles/megasquirt` and rename the **Car1** dir to something like 026h8 or Car2, etc. This means the UN-installer will not remove that directory, so when the new MegaTune is installed the old msq's, logs and the old code's ini file can be used by the new version of MegaTune.
- Now you can UN-install MegaTune and install the new version on the CD.

When you run the new MegaTune it will ask you which project you wish to use, so in the above example it would be 026h8 or Car1 (Car1 is the default project name MegaTune uses). You can rename them and set them both up separately, see below.

More Than One MegaSquirt:

If you have more than one MegaSquirt ECU it is possible to have different codes, temperature sensors or even another version (e.g. MS2 and MS1) for each ECU if you wish,. Or you may just wish to have the option of which one you are going to tune so it's easier to keep files (msq's and logs) separate from each ECU.

To do this you need to run MegaTune and select **File -- Configurator**
In this program go to "**Project**" -- "**NEW**" name the new project, e.g. Cobra then click OK

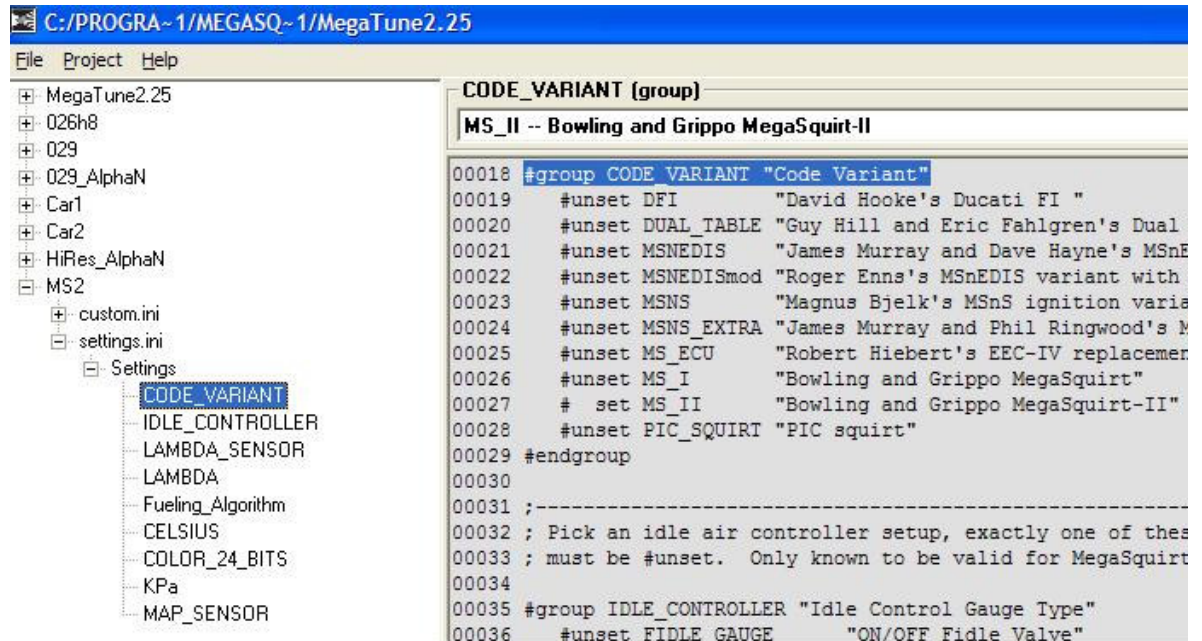
You can also rename your original project, so it's easy to tell them apart. To do this click on "**Car1**" so it is highlighted (this will be the original projects default name) and then select **Project -- Rename**, e.g. VW_VR6

Now you have 2 projects, when you open MegaTune it will ask you which one you wish to use (**VW_VR6** or **Cobra**).

In order to have different codes in each (MS1 and MS2) or maybe one for Alpha_N and one for MAP, maybe one has a wideband lambda, etc, simply open MegaTune and select **File - Configurator**:

In the left side of the Configurator find your project and go into Settings.ini - Settings - CODE_VARIANT

Change this to what ever code you are going to use for that project. To change other settings, e.g. Wideband lambda, etc, simply select them here too. You can set up both projects how you want them. (You can see my example has a lot of projects)



The screenshot shows the MegaTune Configurator interface. The title bar reads "C:/PROGRA~1/MEGASQ~1/MegaTune2.25". The menu bar includes "File", "Project", and "Help". On the left, a tree view shows the project structure: MegaTune2.25, 026h8, 029, 029_AlphaN, Car1, Car2, HiRes_AlphaN, MS2, custom.ini, settings.ini, and Settings. Under "Settings", "CODE_VARIANT" is selected. The main window displays the following configuration:

```
CODE_VARIANT (group)
MS_II -- Bowling and Grippo MegaSquirt-II
00018 #group CODE_VARIANT "Code Variant"
00019 #unset DFI "David Hocke's Ducati FI "
00020 #unset DUAL_TABLE "Guy Hill and Eric Fahlgren's Dual
00021 #unset MSNEDIS "James Murray and Dave Hayne's MSnE
00022 #unset MSNEDISmod "Roger Enns's MSnEDIS variant with
00023 #unset MSNS "Magnus Bjelk's MSnS ignition varia
00024 #unset MSNS_EXTRA "James Murray and Phil Ringwood's M
00025 #unset MS_ECU "Robert Hiebert's EEC-IV replacemen
00026 #unset MS_I "Bowling and Grippo MegaSquirt"
00027 # set MS_II "Bowling and Grippo MegaSquirt-II"
00028 #unset PIC_SQUIRT "PIC squirt"
00029 #endgroup
00030
00031 ;-----
00032 ; Pick an idle air controller setup, exactly one of thes
00033 ; must be #unset. Only known to be valid for MegaSquirt
00034
00035 #group IDLE_CONTROLLER "Idle Control Gauge Type"
00036 #unset FIDLE GAUGE "ON/OFF Fidle Valve"
```

If using more than MS1-Extra and you have different temperature sensors in each car then it is also possible to set each project up so it displays the temperatures using the individual sensor's inc files. (Remember in MS2-Extra the ECU sends the temperatures to MegaTune so theres no need to do this) To do this in MS1-Extra you must have the 3 inc files that are generated in Easytherm for your sensors (see [HERE](#) for more details). In Windows open the relevant

project's directory **c://programfiles/megasquirt/** (e.g. **Cobra**) and then open the "**msCfg**" directory. Paste the 3 inc files into here (e.g. **Cobra/mtCfg**). Any files in here are used when that project (Cobra) is opened, these are selected over the files that are usually used (Megatune2.25/mtCfg) so if you wanted to use 026h8 code for one car and 029y4 for another then you can simply pop the *msns-extra.ini* file for that code in the project's **mtCfg** directory and that will be used.

www.ExtraEFI.co.uk